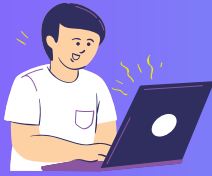


# ACCFIN SKY

## Top Features with links to more info - in no particular order



### Integrated Data Across All Modules

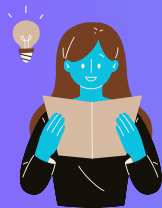
- Accfin Sky's software integrates all modules, making it a comprehensive back office suite for accounting firms. This integration means that while the software consists of different modules catering to specific back office disciplines like Sky Tax, Sky Sec, Sky Trust Sec, Sky Time, Sky Debtors, Sky Fic and Sky Trust Accounting, it operates as a single, cohesive product.

[Click Here.](#)



### One Screen Approach for Ease of Use

- A unified screen approach for the master file and all transactions allows for processing transactions, sending emails, filtering views, and storing unlimited documents without needing to navigate away. [Click Here](#) for Provisional Tax and [Click Here](#) for IT12.



### Tax Enquiry Screen

- Provides a comprehensive view of all interactions with SARS, including submissions, assessments, and communications, with advanced filtering options to view by partner or any other criteria. [Click Here](#) to learn more.



### Provisional Tax Estimated Calculation Screen - Risk Aversion

- Designed for detailed provisional tax calculations, on high net worth taxpayers, allowing past returns to generate the calc with a single click and then adjusting for the current year. [Click Here](#) for more information.

# ACCFIN SKY



## Document Storage Enquiry

- Offers unlimited storage capacity, allowing for the association of documents with transactions and the storage of supporting and calculation documents. [Click Here](#) for more.



## Sticky Notes

- A paperless, CRM-integrated system using sticky notes for task assignments, SARS communications tracking, and filing reviews before submission. [Click Here](#) to explore.



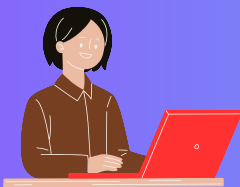
## Correspondence Automatic Downloads

- Enables viewing of SARS correspondence by each tax type, with document access via the correspondence tab. [Click Here](#) for IT12 Correspondence.



## One Click on Tax and Secretarial to See Previous years Years or Transaction Types

- Access historical transaction data with a single click. [Click Here](#) for an overview.



## Secretarial Transactions

- Fully auditable secretarial transactions with historical access and documentation capabilities. See [Structure of a Transaction](#), [Printing Transactions Back in Time](#), [Roll Back of Transactions](#), and [Sky Sec CIPC Tab](#) for more details.

# ACCFIN SKY



## **Beneficial Ownership**

- Computes beneficial ownership to unlimited levels, generating all required reports for the CIPC and masters. [Click Here](#) for more information.



## **Debtors and Time**

- Continuous operation across months and years without the need for month or year-end closures, preserving data indefinitely. Start the new month with out closing the old month. Store all month end documents for later retrieval. [Click Here](#)



## **One Screen Review of Time**

- Consolidates all WIP accounts on a single sheet for efficient review. [Click Here](#) for more details.



## **System Architecture**

- Sky is designed to be cloud-ready and web-enabled, leveraging a PostgreSQL database and JavaScript, which handles extensive data and offers flexibility in deployment. There is no maintenance for the client as Accfin handles this aspect.



## **Digital Signatures**

- Facilitates the use of digital signatures on documents sent individually or in bulk, with automatic system reintegration upon client sign-off. [Click Here](#) for details.



## **Update Shareholders on an IT14**

- Sky Tax pulls the Shareholders automatically from Sky Secretarial. [Click Here](#).